

P1-8
GND

P1-7
Enable
Connect to
GND to enable

P1-6
Heater Current
Feedback

P1-5
Heater Current
Set

P1-4
Laser Current
Feedback

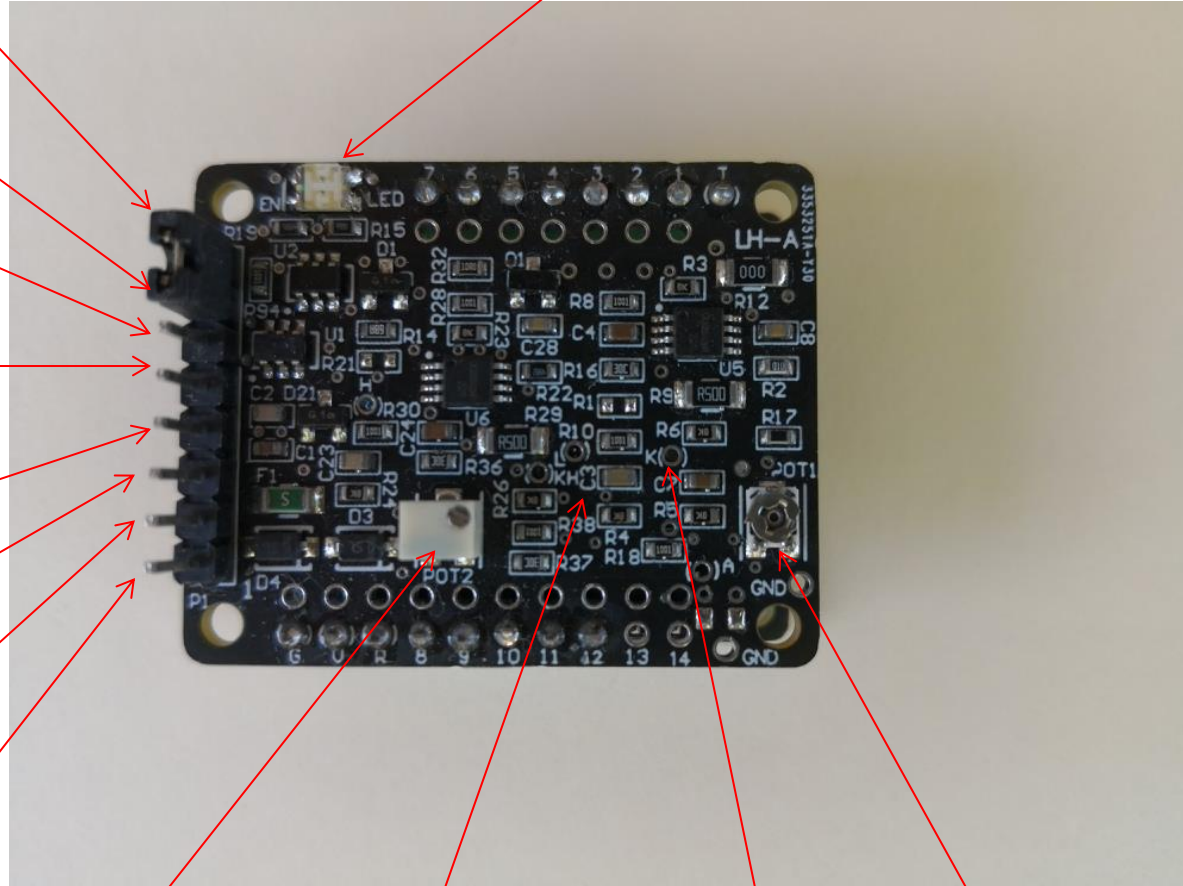
P1-3
Laser Current
Set

P1-2
+5V Input

P1-1
GND

Note:
Pins 3, 4, 5 and 6 of P1 are
Optional External Controls

LED
Laser Enable
Indicator
Green Enabled



Heater Current
Potentiometer

KH
Measure Heater
Current
 $\text{mA} = \text{mV} \times 2$

K
Measure Laser
Current
 $\text{mA} = \text{mV} \times 2$

Laser Current
Potentiometer

Board Pinout