

PL530 Laser Driver with ESP8266 WiFi Board

Model: LHTK

The driver board utilized ESP8266 WiFi OLED Display Development Board to control PL530 laser to obtain the following features:

1. Stable laser current, heater current and TEC temperature controlled by three PID close loop circuits and monitored over OLED display screen.
2. The laser current, heater current and TEC temperature are easily adjusted via the on-board potentiometers.
3. Laser current, heater current and TEC temperature can be monitored and adjusted by HyperTerminal of a computer serial port.
4. Laser Enable/Disable and heater current can be adjusted by WiFi remotely.

Dimension: 72 x 52 x 16 mm

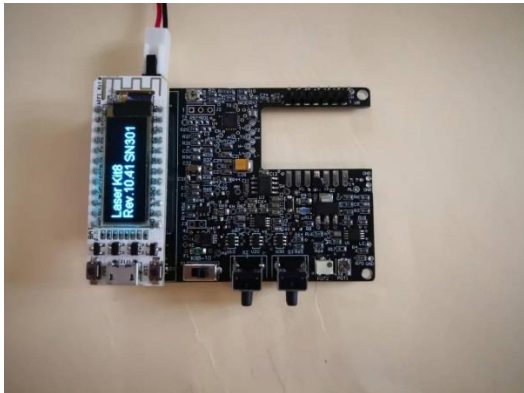


Fig.1. The Driver Board.

Table 1. The laser connection pinout of U8

Pin	
1, 2	Thermistor
3	Laser Kathod LD-
4, 5	Heater
6	TEC+
7	TEC-
11	Laser Anode LD+

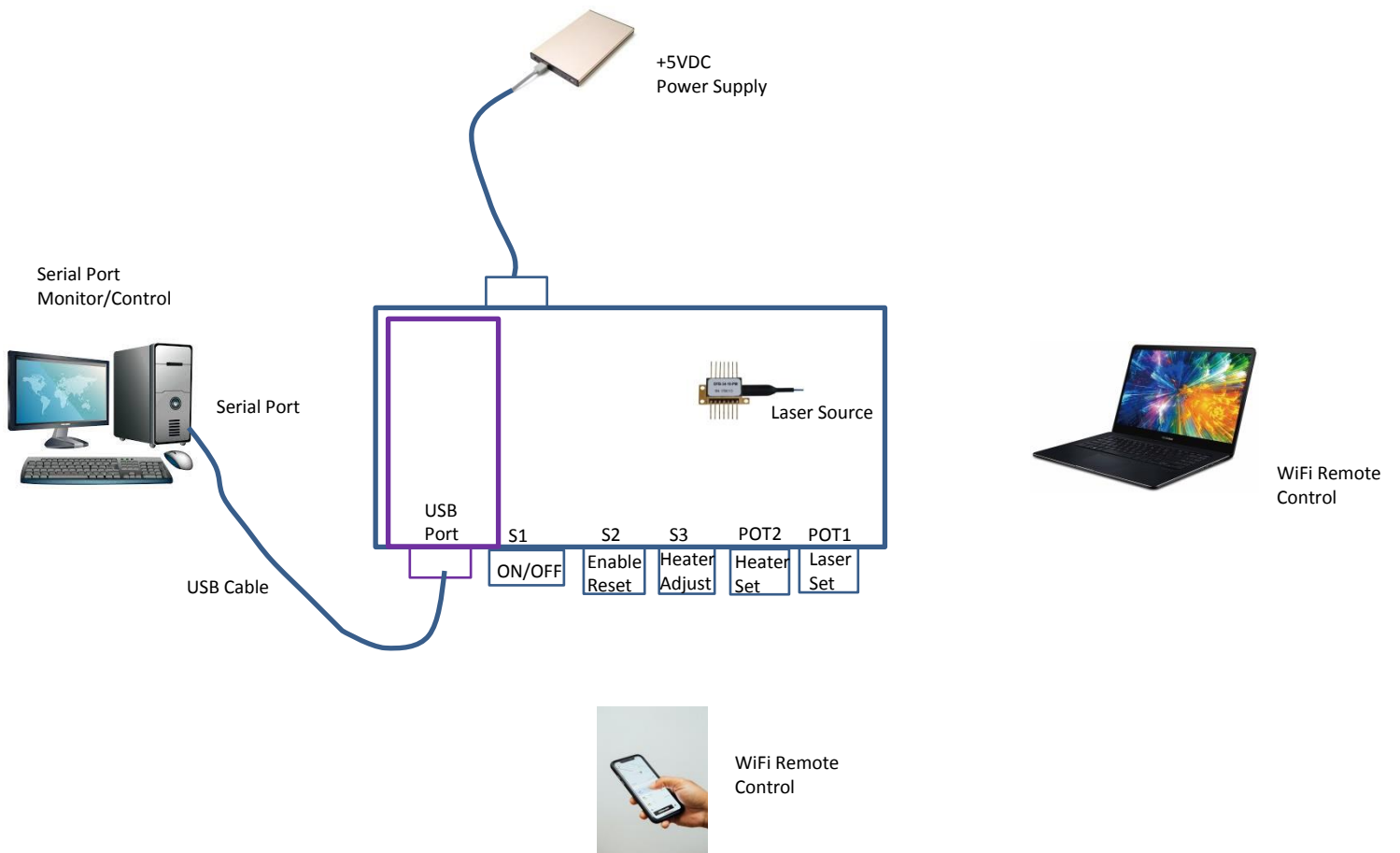


Fig.2. The Driver Board Connection Diagram

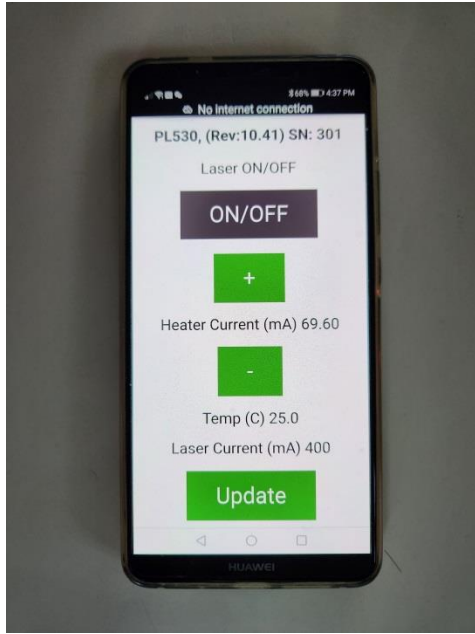


Fig.3. Remote Control via WiFi

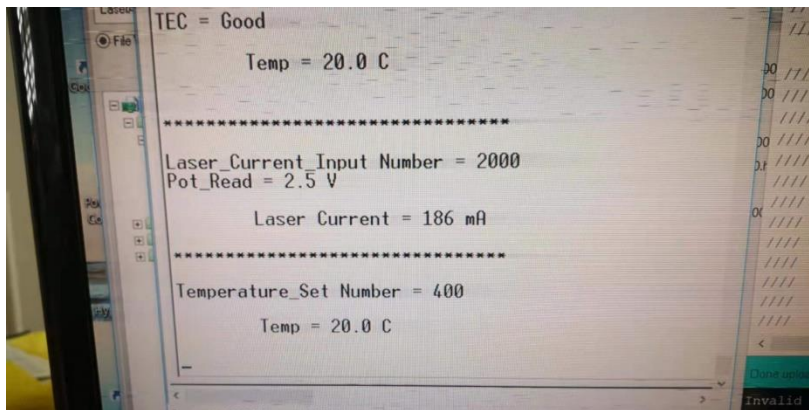


Fig.4. Monitor/Control over Serial Hyper Terminal