

Power Drive Controls

1846 Santo Domingo
Camarillo, CA 93012
U. S. A.
www.pdcontrol.com

TEC Controller Board

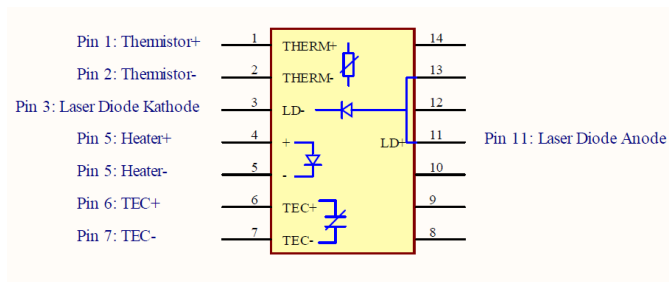
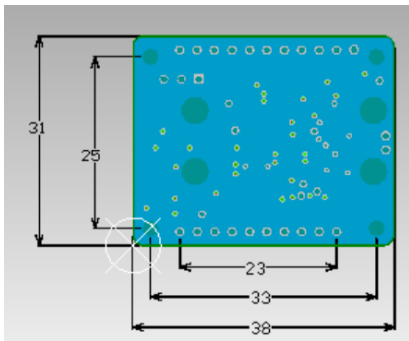
Model: TEC

The TEC driver board utilized TEC controller chip to control constant temperature for butterfly type laser diode with TEC built-in.

It is convenience to plug-in with Laser and Heater Drivers (LH) to obtain mini-sized drivers to control laser and heater currents as well as temperature.

Features:

1. The minimum sized board is easy to use with stabilized TEC temperature controls.
2. The temperature set by default resistors or on-board potentiometer or external control signal over 3 position headers from 20C to 30C.
3. Input DC voltage: +5 VDC (+/- 0.5V), 2 Amp.
4. Green/Red LED indicates Temperature Good/Power status.
5. Designed to mount butterfly type lasers on the board bottom side.
6. Board Size: 38 mm x 31 mm



Thermistor: Pins 1 and 2. TEC+: Pin 6, TEC-: Pin 7.

Laser Anode: Pin 11, Laser Kathode: Pin 3

Different pinout available upon request.

